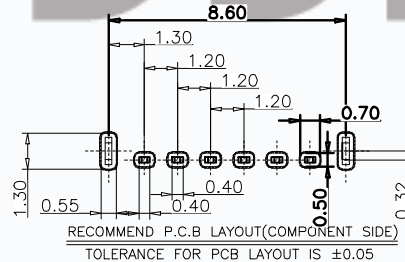
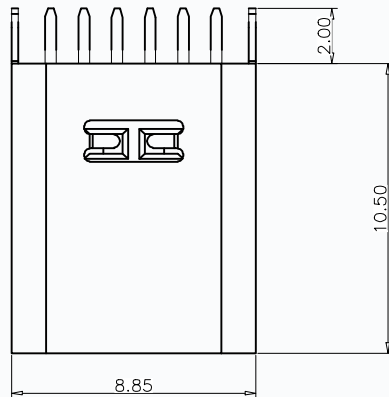
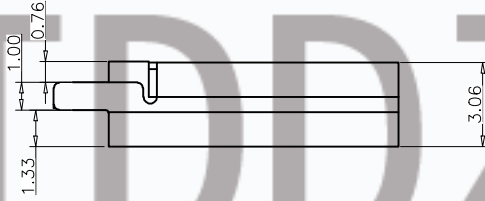
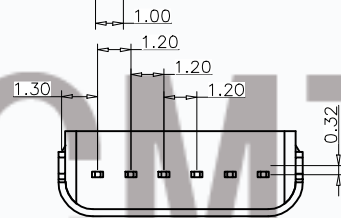
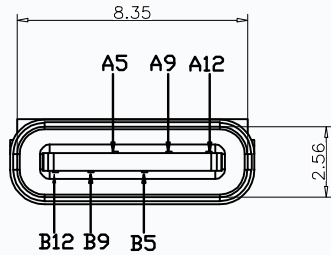
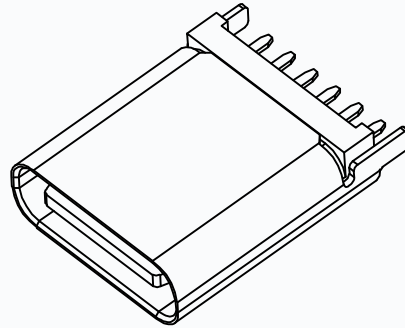
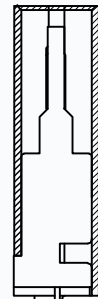
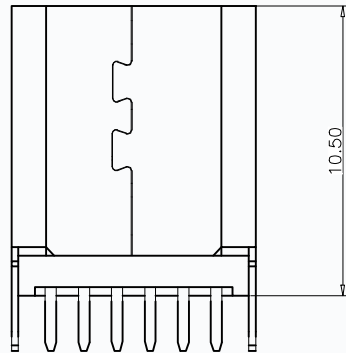


REV.	ECN	DESCRIPTION	MDF'D	DATE
		新订图面		



备注 (NOTE):

1. 材质:

- 1.1 胶芯: LCP UL94 V-0
- 1.2 端子: C2680, T=0.2mm; 镍底, 镀金
- 1.3 外壳: 不锈钢201-H 表面镀镍

2. 电气特性:

- 2.1 接触区: 接触电阻40mΩ Max, 允许10mΩ变化. 测试条件: 20mv, 100mA下测量.
- 2.2 接触电流: 3A VBUS引脚; 1.25A用于GND引脚; 其他引脚为0.25A.

2.3. 额定电压: 5V.

2.4. 耐电压: 100VAC.

2.5. 绝缘电阻: 至少100兆欧.

3. 机械性能:

- 3.1 插入力: 0.5-2.0Kg
- 3.2 拔出力: 0.6-2.04Kg
- 3.3 插拔次数: 5000次.
- 4. 工作环境: -20℃ to +85℃.

USB TYPE C PIN ASSIGNMENTS

PIN NUMBER	SIGNAL NAME	PIN NUMBER	SIGNAL NAME
		B12	GND
		B9	VBUS
A5	CC1		
		B5	CC2
A9	VBUS		
A12	GND		

TABLE:

NO	PART	Q'TY	Material
1	SHELL	1	ZINC ALLOY, NI30u"Min PLATED
2	CONTACT	6	C2680, TIN80u"/Au1u"/NI30u" PLATED
3	1MD HOUSING	1	LCP UL94 V-0 BLACK
4	CAP	1	LCP UL94 V-0 BLACK
5	WATERPROOF RING	1	SILICONE UL94 V-0 BLACK

**CMTDDZ** 东莞市田都科技有限公司  
Dongguan TianDu Technology Co. Ltd.

页码 (SHEET)	1	单位 (UNIT): MM
版本 (REV)	A1	比例 (SCALE) 1:1
日期 (DATE)	2022. 7. 10	⊕ ⊖
设计 (DESIGN)	ERIC	未注公差 TOLERANCE UNDESIGNATED
审核 (CHECKED)	_____	L I ±0.20
核准 (APPROVED)	_____	L II ±0.15
		L III ±0.10
		L IV ±0.05
		L V ±0.02

品名 (ITEM NO)	TYPE-C6P直插10.5 2.0脚
料号 (PART NO)	T11-06LC02-10.5H-2L
图号 (DWG NO)	A1