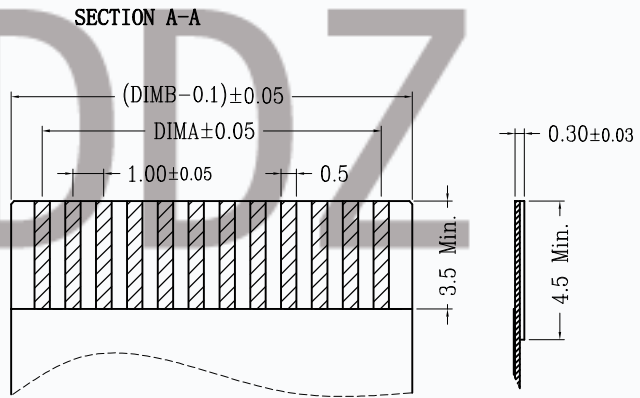
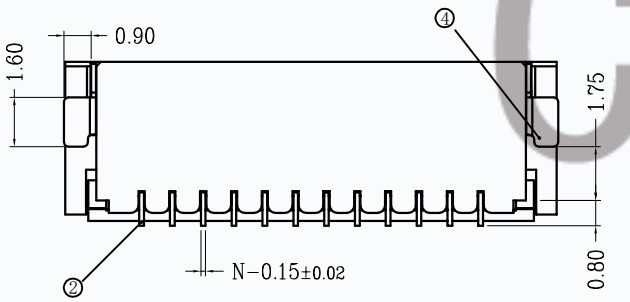
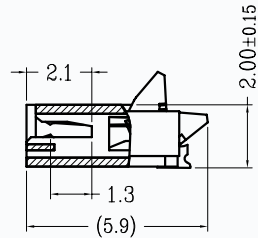
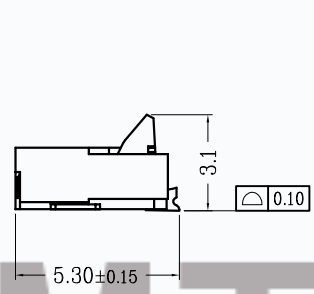
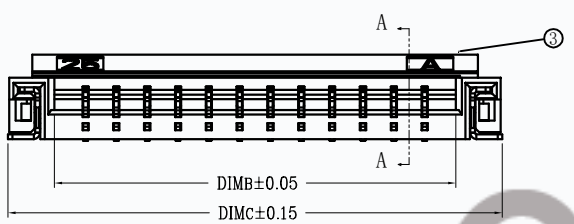
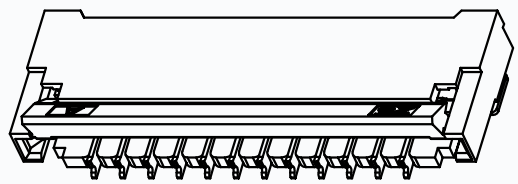
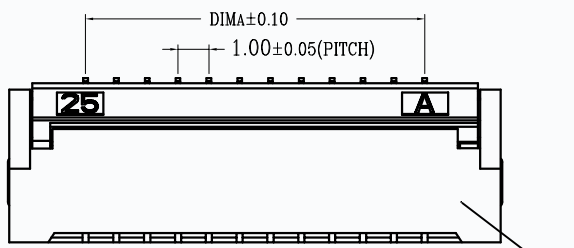


版次	变更摘要	日期
0	新产品发行	2015/7/28
1	增加胶芯小缺口, 与小PIN结构保持一致	2021/9/19

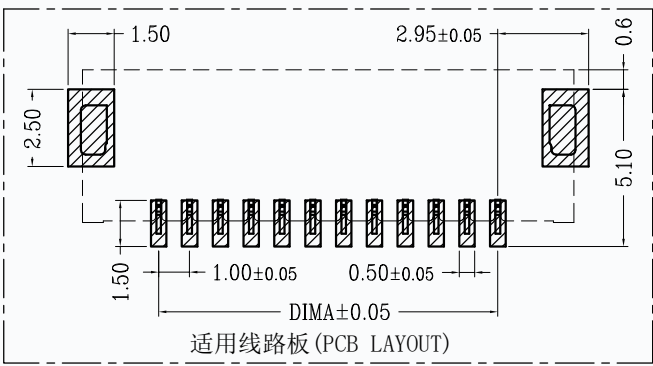
序号	品名	材质
①	1.0后压胶芯 (H2.0)	LCP UL94V-0 本色
②	0.5后压端子 (H2.0)	铜合金/表面镀锡 镀金
③	0.5后压后盖 (H2.0)	LCP UL94V-0 黑色
④	0.5后压焊片 (H2.0)	铜合金/表面镀锡



CKT	DIMA	DIMB	DIMC
4	3.00	5.02	8.04
5	4.00	6.02	9.04
6	5.00	7.02	10.04
7	6.00	8.02	11.04
8	7.00	9.02	12.04
9	8.00	10.02	13.04
10	9.00	11.02	14.04
11	10.00	12.02	15.04
12	11.00	13.02	16.04
13	12.00	14.02	17.04
14	13.00	15.02	18.04
15	14.00	16.02	19.04
16	15.00	17.02	20.04
17	16.00	18.02	21.04
18	17.00	19.02	22.04
19	18.00	20.02	23.04
20	19.00	21.02	24.04
21	20.00	22.02	25.04
22	21.00	23.02	26.04
23	22.00	24.02	27.04
24	23.00	25.02	28.04
25	24.00	26.02	29.04
26	25.00	27.02	30.04
27	26.00	28.02	31.04
28	27.00	29.02	32.04
29	28.00	30.02	33.04
30	29.00	31.02	34.04

适用扁平线(Applicable Flat Cable)

- 技术指标:
1. 塑件表面应光洁、无毛边、无明显收缩、缺陷、裂纹等现象.
  2. 温度范围: -25° C~85° C.
  3. 额定电压: 50V, AC/DC(等效).
  4. 接触电阻: ≤0.03Ω.
  5. 绝缘电阻: ≥500MΩ
  6. 产品料号:



适用线路板(PCB LAYOUT)

T17-1020HY-\*\*\* \* -\*\*\*

产品PIN数

Plating(电镀方式)  
0: 端子全雾锡  
1: 端子全金(G/F OVERALL)  
5: 端子半金锡

Packing(包装方式)  
T: TUBE管装  
R: TAPE & REEL卷装

00 后盖有LOGO:TD  
OW 后盖无LOGO



一般公差(TOLERANCE)  
X ±.50 .XX ±.10  
X ±.20 .XXX ±.05  
ANGLES ±1°

**CMTDDZ 东莞市田都科技有限公司**  
Dongguan TianDu Technology Co., Ltd.

品名(TITLE) 1.0 Pitch后压卧式(H=2.0)	制图(DR) ERIC
料号(DWG.NO) T17-1020HY 系列	校对(CHKD)
比例(SCALE) 1:1	单位(UNITS) mm
张数(SHEET) 1 OF 1	尺寸(SIZE) A4
REV A	审核(APPD)