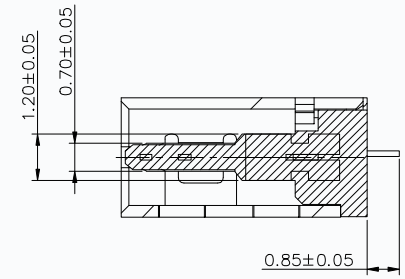
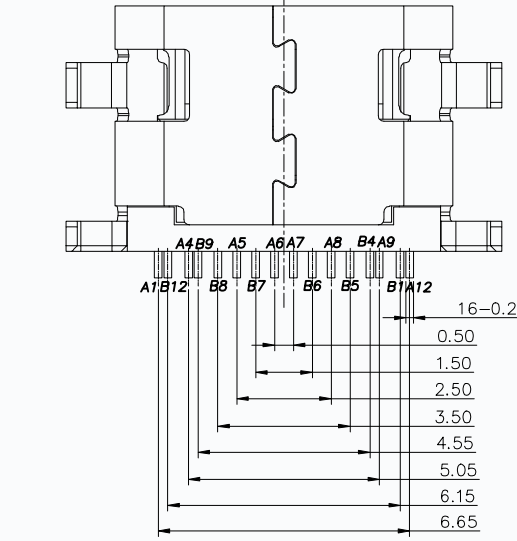
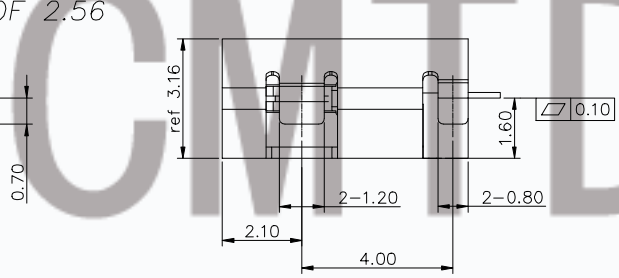
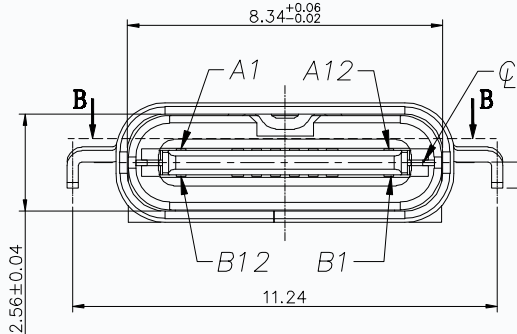
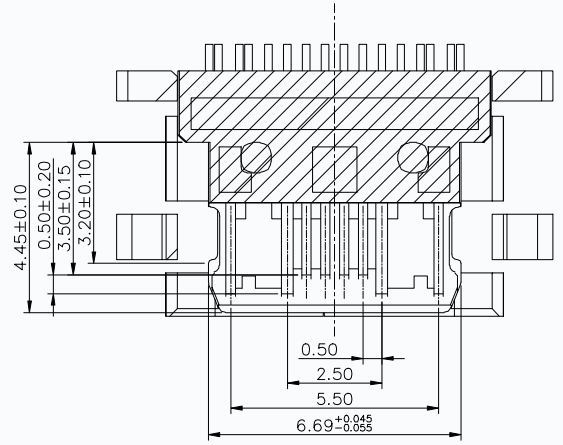
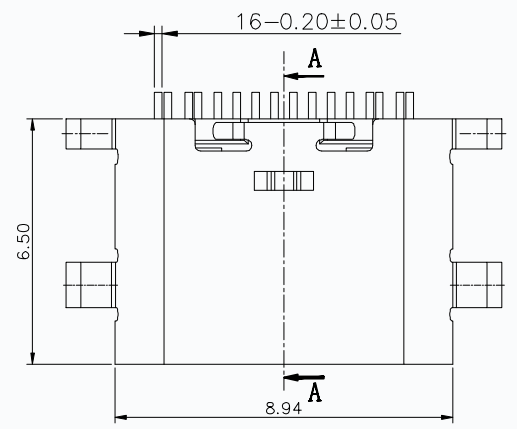


REV.	DESCRIPTION	NAME	DATE
B	Change frame	ERIC	2021/06/05
C	Adjust tolerance	ERIC	2022/04/01

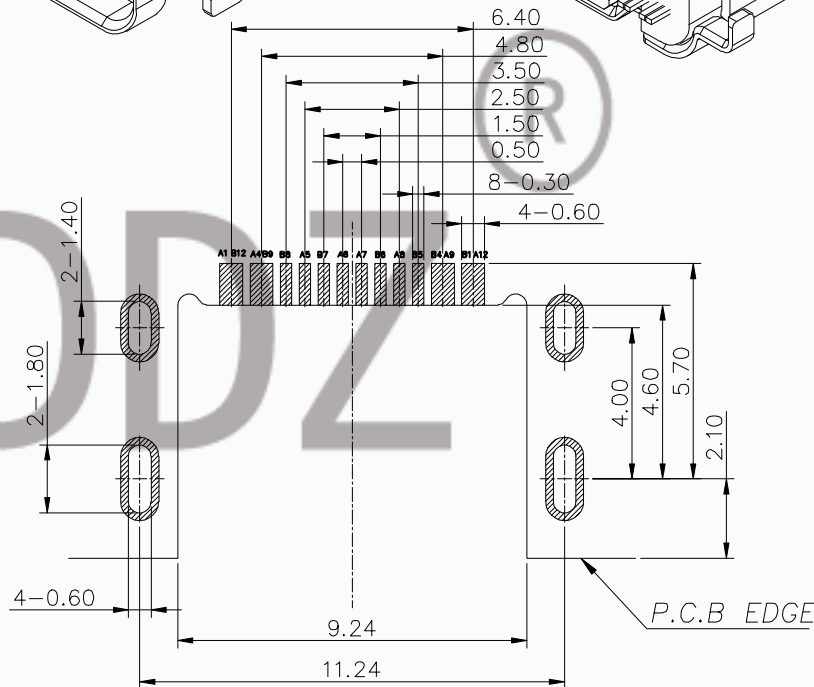
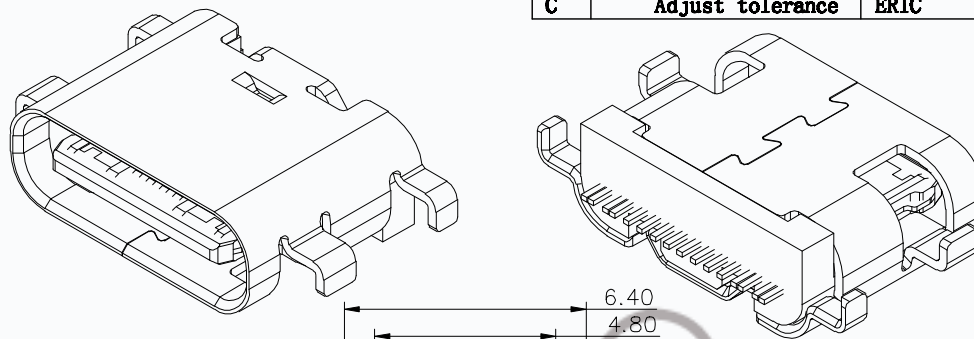


NOTE:

- MATERIAL SPECIFICATION:
  - HOUSING: HIGH TEMPERATURE RESISTANT PLASTIC, UL94 V-0.
  - CONTACTS: COPPER ALLOY
  - MID PLATE: STAINLESS STEEL
  - SHELL: STAINLESS STEEL
- PLATING SPECIFICATION:
  - CONTACTS:
    - Ni 50u" MIN. UNDER PLATED OVER ALL.
    - Au PLATED ON THE FUNCTIONAL AREA OF CONTACT. (GOLD PLATING THICKNESS FOLLOW THE P/N)
    - GOLD FLASH PLATING ON SOLDER AREA
  - FRONT SHELL:
    - Ni 30u" MIN. UNDER PLATED OVER ALL.
- MECHANICAL PERFORMANCE,
  - INSERTION FORCE: 0.5~2.0kgf.
  - REMOVAL FORCE: 0.8kgf~2.0kgf.
  - DURABILITY: 10000 CYCLES.
- ELECTRICAL PERFORMANCE,
  - CURRENT RATING: 5A  
VOLTAGE RATING: 20V
  - INSULATION RESISTANCE: 100MΩ MIN. AT 50MΩ
  - DIELECTRIC WITHSTAND VOLTAGE, AC 100V FOR 1 MINUTE.
  - LOW CONTACT RESISTANCE: INITIAL 40MΩ
- ENVIRONMENTAL PERFORMANCE:
  - OPERATING TEMPERATURE: -30°C~+80°C.
- IR REFLOW:
  - THE PEAK TEMPERATURE ON THE BOARD SHALL BE MAINTAINED FOR 10 SECONDS AT 260°C.

TOLERANCE UNSPECIFIED .0 ±0.35 .00 ±0.25 .000 ±0.15 X ° ±2.00° ASSEMBLY DRAWING		<b>CMTDDZ 东莞市田都科技有限公司</b> Dongguan TianDu Technology Co. Ltd.		
TITLE: USB TYPE C 16PIN, L-6.50mm 沉板1.60mm-客户图		SIZE: A4	UNIT: mm	PART. NO: T11-16CB06-1.6H-3-6.5L
DRAWN DATE: ERIC 2022/04/01	CHECKED DATE: ERIC 2022/04/01	SCALE: 1:1	PROJECTION:	REV.: C
APPROVED DATE: JEFF 2022/04/01	DWG PATH	T11-16CB06-1.6H-3-6.5L	PATH 1/3	

REV.	DESCRIPTION	NAME	DATE
B	Change frame	ERIC	2021/06/05
C	Adjust tolerance	ERIC	2022/04/01



USB TYPE-C PIN ASSIGNMENTS

PIN NUMBER	SIGNAL NAME	PIN NUMBER	SIGNAL NAME
A1	GND	B12	GND
A4	VBUS	B9	VBUS
A5	CC1	B8	SBU2
A6	Dp1	B7	Dn2
A7	Dn1	B6	Dp2
A8	SBU1	B5	CC2
A9	VBUS	B4	VBUS
A12	GND	B1	GND

RECOMMEND P.C.B LAYOUT (COMPONENT SIDE)

TOLERANCE FOR PCB LAYOUT IS  $\pm 0.05$

TOLERANCE UNSPECIFIED	
.0	$\pm 0.35$
.00	$\pm 0.25$
.000	$\pm 0.15$
$\angle$	$\pm 2.00^\circ$

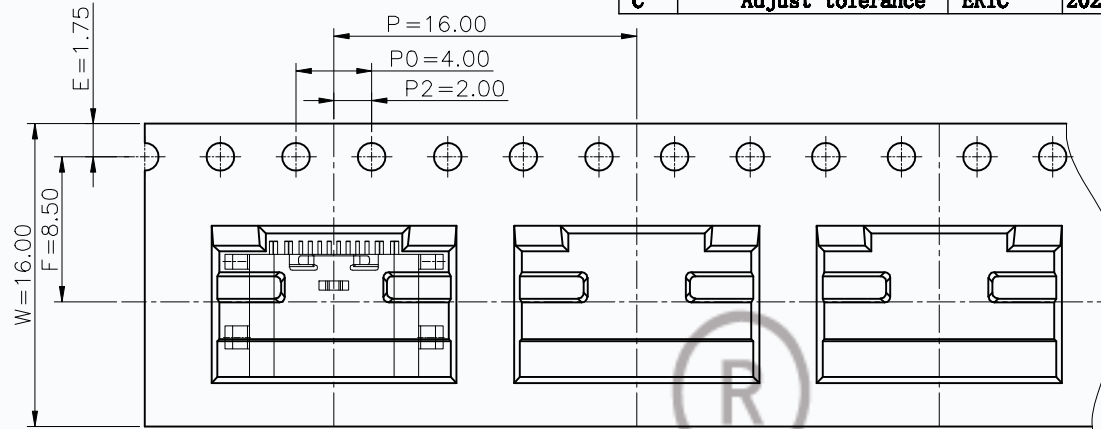
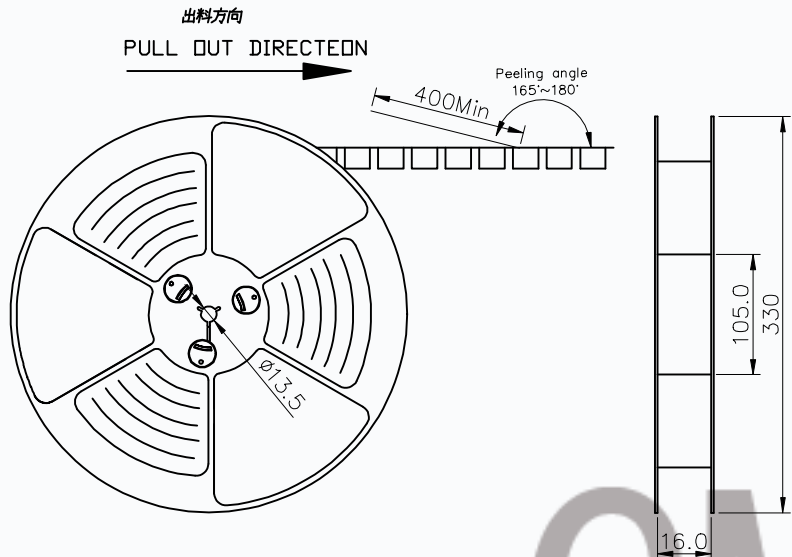
ASSEMBLY DRAWING

**CMTDDZ** 东莞市田都科技有限公司  
Dongguan TianDu Technology Co. Ltd.

TITLE: USB TYPE C 16PIN, L-6.50mm  
沉板1.60mm—客户图

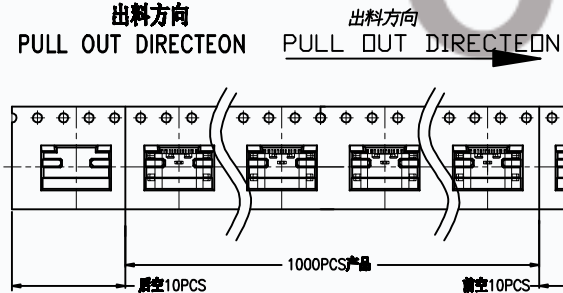
DRAWN	ERIC	DATE	2022/04/01	SIZE: A4	UNIT: mm.	PART. NO:	T11-16CB06-1.6H-3-6.5L
CHECKED	ERIC	DATE	2022/04/01	SCALE:	1:1	PROJECTION	REV.: C
APPROVED	JEFF	DATE	2022/04/01	DWG	PATH	T11-16CB06-1.6H-3-6.5L	PATH 2/3

REV.	DESCRIPTION	NAME	DATE
B	change the frame	ERIC	2021/06/05
C	Adjust tolerance	ERIC	2022/04/01



NOTES

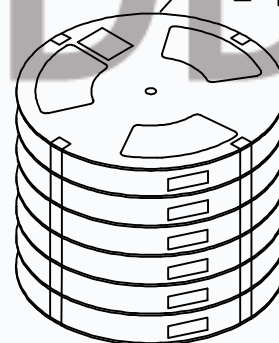
1. 帶子引導長度  
LEAD TAPE LENGTH  
出料方向  
PULL OUT DIRECTEON



2. 上帶 剝力力為: 0.1~1.3N(10.2gf~130gf)  
PEELING OFF FORCE OF TOP TAPE:0.1~1.3N(10.2gf~130gf)  
出貨運輸過程中一定注意:  
THIS REQUIREMENT SHOULD BE APPLIED AT SHIPMENT:  
卷帶在運輸過程中不能散開  
PEELING OFF SHOULD NOT BE ALLOWED DURING TRANSPORTATION

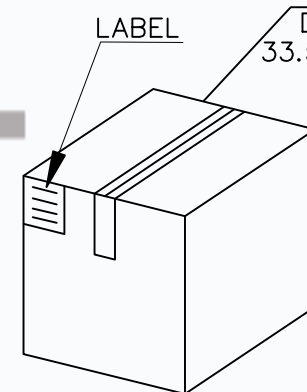
TAPE & REEL 10 PCS

1 REEL  
= 1000 PCS



BOX

DIMENSIONS:  
33.5X33.5X30.5



1 CARTON  
=14 REELS  
=14000 PCS

TOLERANCE UNSPECIFIED

.0	±0.35
.00	±0.25
.000	±0.15
X°	±2.00°

ASSEMBLY DRAWING

**CMTDDZ** 东莞市田都科技有限公司  
Dongguan TianDu Technology Co. Ltd.

TITLE: USB TYPE C 16PIN, L-6.50mm  
沉板1.60mm—客户图

包裝明細表 (The detail of the packing)

產品料號 (Product No.)	包裝容量 (Packing Capacity)			重量 Weight (Kg)		
	pcs/box	boxs/Carton	Pcs/Box	N.W./Pcs	N.W./Box	G.W./Box
T11-16CB06-1.6H-3-6.5L	1000	14	14000	—	—	—

DRAWN DATE	ERIC 202/04/01	SIZE:A4	UNIT:mm.	PART. NO:	T11-16CB06-1.6H-3-6.5L		
CHECKED DATE	ERIC 202/04/01	SCALE:	1:1	PROJECTION		REV.:	C
APPROVED DATE	JEFF 202/04/01	DWG	PATH	T11-16CB06-1.6H-3-6.5L			PATH 3/3