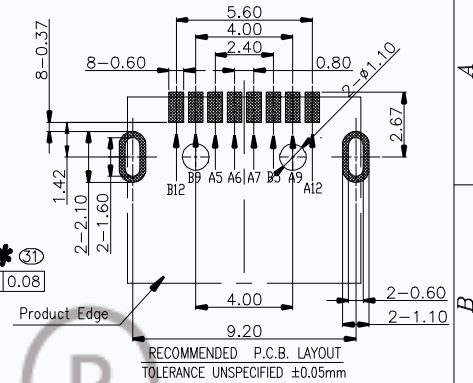
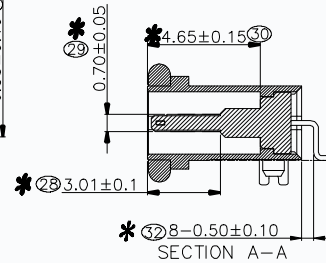
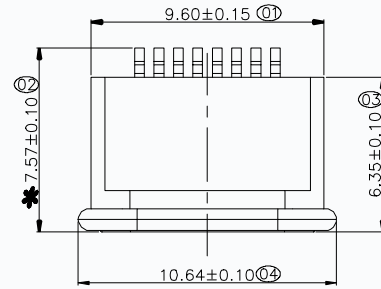


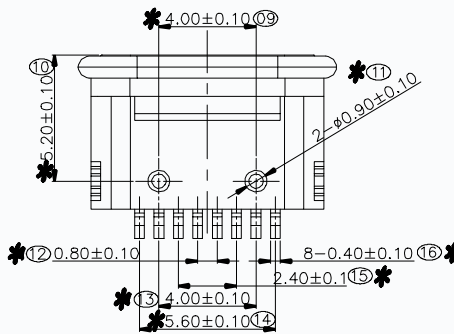
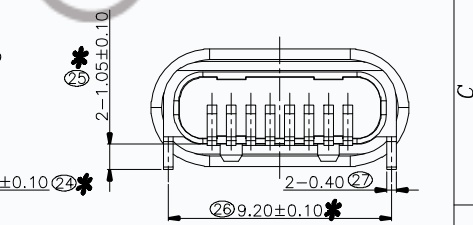
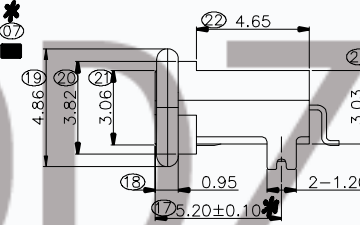
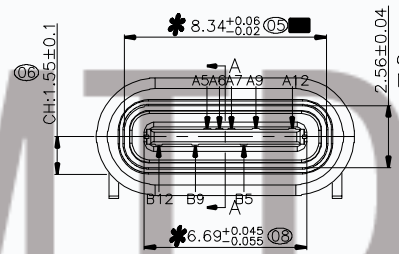
RoHS HF Compliant

NOTE:

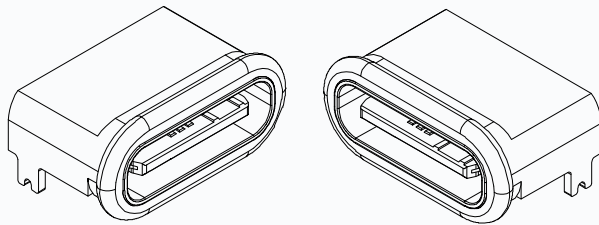
- Material:
  - All Housing: LCP(Polyplastics),Black,Thermoplastics,UL94V-0
  - Cover: LCP(Polyplastics),Black,Thermoplastics,UL94V-0
  - Contact: Copper Alloy
  - Mid Plate: Stainless Steel
  - Shell: Kirsitt
- FINISH:
  - Contact: Au 1u" Min.on Contact Area
  - Bright Tin 80~200u" on Solder Area
  - 40~200u" Nickel Underplating Over All
  - Mid-Plate: Cleaning Over All
  - Shell: 50~200u" Nickel Over All
- Electrical Characteristics:
  - Current Rating: 3A For Pin(A12,A9,B12,B9)
  - 1.25A For Pin(B5,A5)
  - 0.25A For Others Pin
  - Insulation Resistance: 100MΩ Min.
  - Contact Resistance: 40 mΩ Max.
  - Dielectric Withstanding Voltage: 100V/AC/1 Minute/0.1mA
- Mechanical Characteristics:
  - Insertion Force: 5~20N
  - Extraction Force: Initial: 6~20N
  - Durability :10000 Cycles
  - Initial:5N to 20N;After10,000 insertion/extraction Cycles:6N to 20N
- Operating Temperature: -35°C TO +85°C
- DIMENSION MARK "⊗" IS FAI
- DIMENSION MARK "\*" IS QIP
- DIMENSION MARK "■" IS CPK



RECOMMENDED P.C.B. LAYOUT  
TOLERANCE UNSPECIFIED ±0.05mm



A5	CC1		
A6	DP1		
A7	DN1	B12	GND SHORT
A9	VBUS	B9	VBUS
A12	GND SHORT	B5	CC2
PIN	SIGNAL NAME	PIN	SIGNAL NAME



4			copper alloy	NOte. 2	ISBT
3			LCP/PP UL94V-0, B		IPCS
2			stainless steel	NOte. 2	IPCS
1			kirsitt	NOte. 2	IPCS
NO.	品名	料号	材料	表面处理	检验
	NAME	PART NUMBER	MATERIAL	PLATING	MARK

检验	1
比例	1:1
数量	1/1
制图	
审核	
日期	
版本	
修改	
备注	
材料	
规格	
数量	
检验	
日期	
版本	
修改	
备注	

**CMDDZ 东莞市田都科技有限公司**  
Dongguan TianDu Technology Co., Ltd.

图号: T11-00902-CH1.05

规格: .X±0.30 X'±3' .XX±0.20 .X'±1' .XXX±0.10 .XX'±0.5'

名称: 连接器

检验: 合格

日期: 2023-08-08

版本: 1.0

修改: 1

备注: 检验合格

