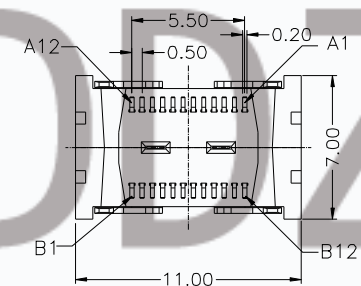
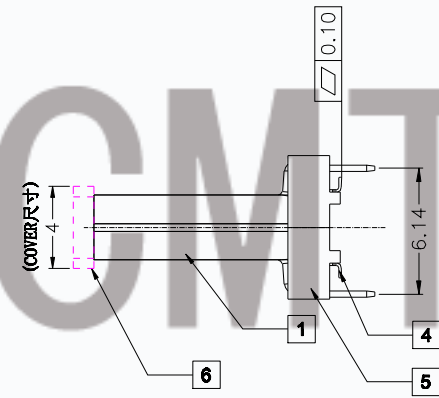
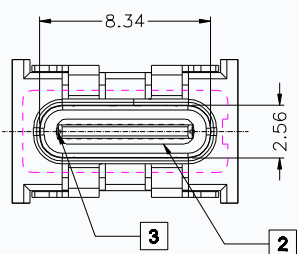
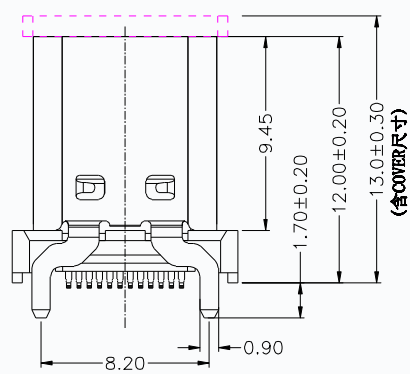


RECOMMEND P.C.B LAYOUT (COMPONENT SIDE)
TOLERANCE FOR PCB LAYOUT IS ± 0.05
KEEP OUT AREA



T11-24LS07-12H-XX-R

Mating Area plating
01: Au 1u"Min.
03: Au 3u"Min.
05: Au 5u"Min.
10: Au 10u"Min.
15: Au 15u"Min.
30: Au 30u"Min.



- 1.Contact Resistance:40mOHM Max.;
- 2.Dielectric Withstanding Voltage:100V AC For 1 Minute;
- 3.Insulation Resistance:100M OHM Min.;
- 4.Mating And unmating Force:
Mating Force: 5~20N
Unmating Force: 8~20N;
6~20N AFTER TEST;
- 5.Durability:10000 Cycles;

Item	Title	Material	Dispose	Q'TY
1	Shell	SUS304	Ni:30u" Min.	1PCS
2	GND Plate	SUS301		2PCS
3	Mid Plate	SUS301		1PCS
4	Contact	C7025	Mating Area: See P/N Solder Tails: Matt Tin	2PCS
5	InsertMolding	LCP E6808	UL 94V-0 Black	1PCS
6	COVER	LCP E6808	UL 94V-0 Black	1PCS

X. ± 0.35	APPD:	TITLE:	PART NO:
.X ± 0.25	JEFF	USB 3.1 TYPE C FEMALE	T11-24LS07-12H
.XX ± 0.15	CHKD:	VERTICAL H12.0mm	
.XXX ± 0.10		SMT TYPE	
X' ± 2'	DR:		
.X' ± 1.5'	ERIC		
	UNITS: mm	SCALE: 3:1	DWG NO: CUSTOMER DRAWING
			T11-24LS07-12H
			SHEET:10F1
			REV: A

A	TD2020-XXXX	New Drawing	ERIC	2020/03/30
REV	ECN NO	DESCRIPTION	DESIGN	DATE