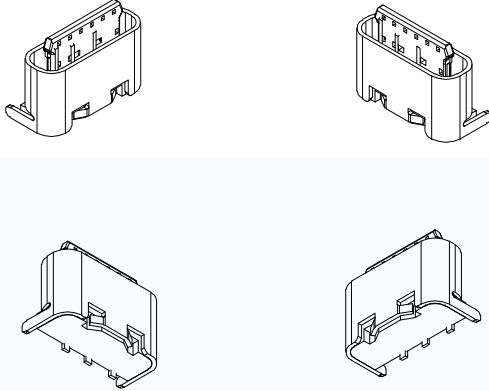


CMTDDZ 东莞市田都科技有限公司

Dongguan TianDu Technology Co. Ltd.

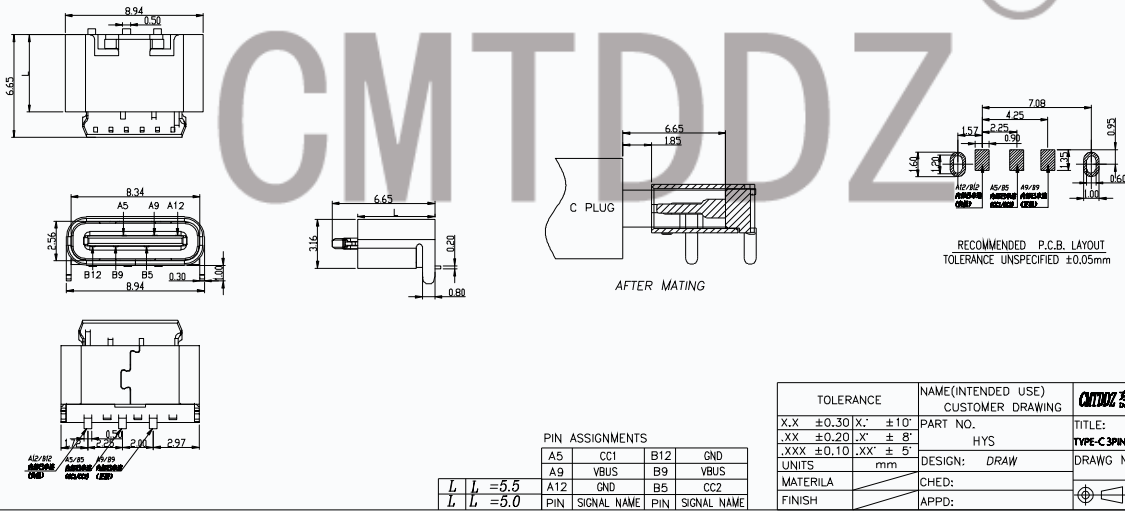
TYPE-C 3PIN-板上短体后两脚插



PART SPECIFICATIONS:

1. MATERIAL SPECIFICATION:
 - 1.1 HOUSING: HIGH TEMPERATURE RESISTANT PLASTIC, UL94 V-0.
 - 1.2 CONTACTS: COPPER ALLOY
 - 1.3 SHELL: STAINLESS STEEL
2. PLATING SPECIFICATION:
 - 2.1 CONTACTS:
 - Ni 50u" MIN. UNDER PLATED OVER ALL.
 - Au PLATED ON THE FUNCTIONAL AREA OF CONTACT.
 - Au PLATED ON SOLDER AREA.
 - 2.2 FRONT SHELL:
 - Ni 50u" MIN. UNDER PLATED OVER ALL.
3. MECHANICAL PERFORMANCE:
 - 3.1 INSERTION FORCE: 0.5~2.0kgf.
 - 3.2 REMOVAL FORCE: 0.6kgf~2.0kgf.
 - 3.3 DURABILITY: 5000 CYCLES.
4. ELECTRICAL PERFORMANCE:
 - 4.1 CURRENT RATING: 3.0A
VOLTAGE RATING: 5.0V
 - 4.2 LLCR:
 - VBUS & GND PINS AND OTHER PINS: 40mΩ/PIN MAX.
 - LLCR MAX. CHANGE OF ALL PINS: 10mΩ.
 - 4.3 INSULATION RESISTANCE: 100MΩ MIN
 - 4.4 DIELECTRIC WITHSTAND VOLTAGE, AC 100V FOR 1 MINUTE.
5. ENVIRONMENTAL PERFORMANCE:
 - OPERATING TEMPERATURE: -25°C~+85°C.
6. IR REFLOW:
 - THE PEAK TEMPERATURE ON THE BOARD SHALL BE MAINTAINED FOR 10 SECONDS AT 260°C.

尺寸参数 / PRODUCT DIMENSION



包装规范 / PACKING SPECIFICATION

